






ELEMENTI MODULARI DI STAFFAGGIO **MODULAR CLAMPING ELEMENTS**



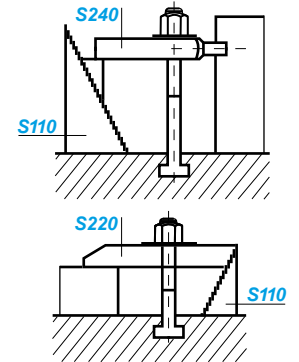
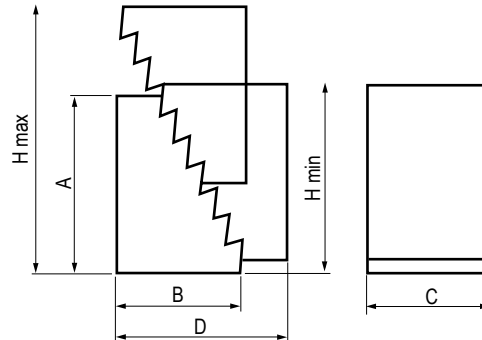


SIMBOLOGIA DATI TECNICI
TECHNICAL DATA ICONS

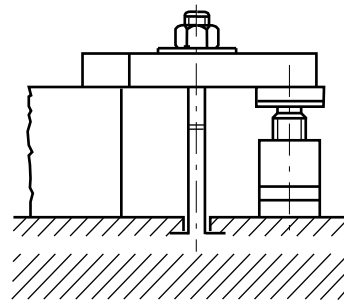
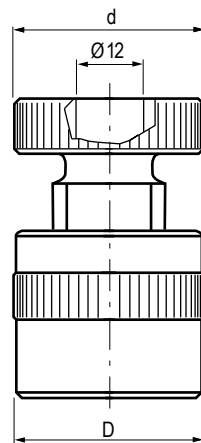
<p>ELEMENTI MODUULARI DI STAFFAGGIO MODULAR CLAMPING TOOLS</p>						 <p>Kit staffaggi Clamping kit</p>
<p>BULLONERIA VARIA NUTS AND BOLTS</p>						 <p>Bulloneria varia Nuts and bolts</p>
<p>POSSIBILITÀ DI POSSIBILITY OF</p>						 <p>Staffe intelligenti Intelligent clamps</p>
<p>PAGINE PAGES</p>					 <p>Accessori & Ricambi Accessories & Spare Parts</p>	 <p>Istruzioni corretto utilizzo Instruction for a proper use</p>

Dimensioni mm / Dimensions mm	B	C	D	H min	H max	gr	Cod.	€
Art. S110								
31.5	22	30	38	31,5	53	90	S110.00001	10
64.5	36.5	30	70	64,5	105	300	S110.00002	13
128	68	30	132	128	208	1050	S.110.00003	22

 Appoggi dentati
Toothed supports

 Altezza gradino: verticale = 4,65 mm / Orizzontale = 2,3 mm
Height of tooth: vertical = 4,65 mm / horizontal = 2,3 mm


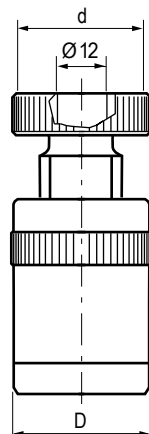
H min	H max	d	D	kN	gr	Passo	Cod.	€
Art. S120								
38	50	34	34	20	190	M30	S120.00050	27
50	70	50	50	60	620	M30	S120.00070	35
70	100	50	50	60	900	M30	S120.00100	40
100	140	65	70	105	2600	Q 40 x 6	S120.00140	57
140	210	70	80	180	4900	Q 40 x 6	S120.00210	76
190	300	80	100	360	10500	Q 40 x 6	S120.00300	140

 Appoggi a vite
Screw supports


h min	H max	d	D	kN	gr	Cod.	€
Art. S121							
42	52	50	50	30	370	S121.00050	33
60	72	50	50	30	380	S121.00070	39
70	100	50	50	30	600	S121.00100	51

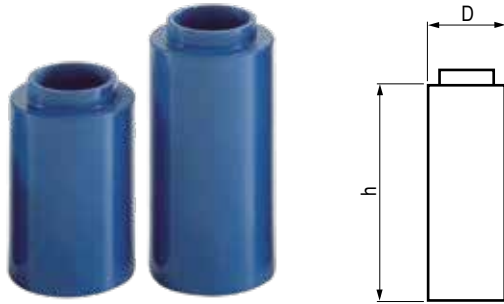
 Appoggi a vite con base in alluminio
Screw supports with aluminium base

h min	H max	d	D	kN	gr	Cod.	€
Art. S122							
57	64	50	50	30	380	S122.00050	60
75	84	50	50	30	550	S122.00070	67
85	112	50	50	30	710	S122.00100	80

 Appoggi a vite con base magnetica
Screw supports with magnetic base

 Possibilità di posizionamento e registrazione sia in orizzontale che in verticale
Possibilità di posizionamento e registrazione sia in orizzontale che in verticale

 Base-materiale Art. S121 e S122: lega in alluminio ERGAL (EN 7075 UNI 3735)
Base-material Art. S121 and S122: ERGAL aluminium alloy (EN 7075 UNI 3735)

Dimensioni mm / Dimensions mm	D	h	per Articolo	gr	Cod.	€
Art. S125 Prolungha per appoggi a vite Extension pieces for screw supports	35	25	S120.00050	25	S125.35025	14
	35	50	"	50	S125.35050	14
	35	75	"	75	S125.35075	17
	35	100	"	100	S125.35100	19
	50	50	S120.00070 / 100	50	S125.50050	20
	50	75	"	75	S125.50075	24
	50	100	"	100	S125.50100	27
	50	150	"	150	S125.50150	32
	70	50	S120.00140	50	S125.70050	33
	70	100	"	100	S125.70100	37
	70	150	"	150	S125.70150	49
	70	200	"	200	S125.70200	57



Utilizzato con l'Art. S120 permette di prolungare l'altezza dell'appoggio. Possono essere sovrapposte.

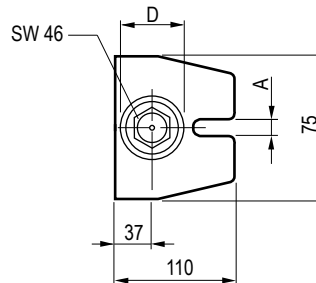
Used with S120 give possibility to extend the length of the support. They should be placed one upon another

Art. S130

Appoggi a vite ATLAS
Screw supports ATLAS type



h min	H max	A	D	kN	gr	Cod.	€
100	140	18	50	60	1800	S130.18140	76
140	200	18	50	60	2300	S130.18200	82
200	320	22	50	40	3600	S130.22320	135
320	550	22	50	25	5500	S130.22550	184



Filettatura trapezoidale passo 30 x 6. Con vite di fermo
Trapezoidal thread 30 x 6. With stationary screw

Art. S131

Appoggi a vite tipo pesante
Screw bearing type heavy

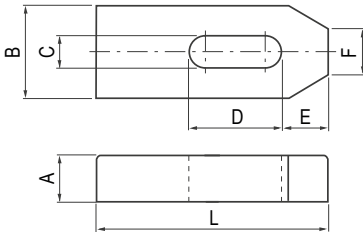
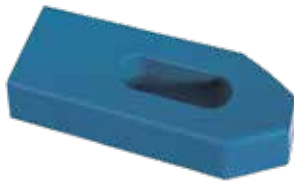


h min	H max	A	D	kN	gr	Cod.	€
200	300	26	70	80	9500	S131.00300	238
280	460	26	70	60	11000	S131.00460	310
430	750	26	70	50	13500	S131.00750	425
710	1250	26	70	45	19000	S131.01250	541

Filettatura trapezoidale passo 40 x 6
Trapezoidal thread 40 x 6

Dimensioni mm / Dimensions mm
Art. S210

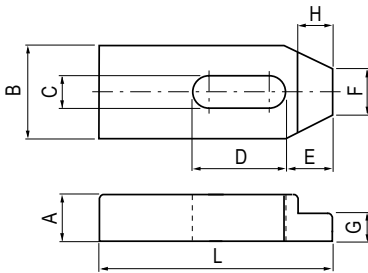
 Staffe semplici
Standard clamps

R. > 700 N / mm²


A	B	C	D	E	F	G	H	L		gr	Cod.	€
10	20	7	20	10	8			50	6	65	S210.07050	10
12	25	9	22	13	10			60	8	115	S210.09060	11
15	30	11	30	15	12			80	10	225	S210.11080	13
20	40	14	40	21	14			100	12-14	500	S210.14100	16
20	40	14	50	21	14			125	12-14	620	S210.14125	16
20	40	14	65	21	14			160	12-14	815	S210.14160	19
25	50	18	45	26	18			125	16-18	980	S210.18125	22
25	50	18	65	26	18			160	16-18	1260	S210.18160	22
25	50	18	80	26	18			200	16-18	1600	S210.18200	26
30	60	22	60	30	22			160	20-22	1850	S210.22160	29
30	60	22	80	30	22			200	20-22	2300	S210.22200	32
30	70	26	80	35	26			200	24	2650	S210.26200	33
30	70	26	105	35	26			250	24	3300	S210.26250	37
40	80	34	100	45	34			250	27-30	5000	S210.34250	55
40	80	34	130	45	34			315	27-30	6200	S210.34315	64

Art. S211

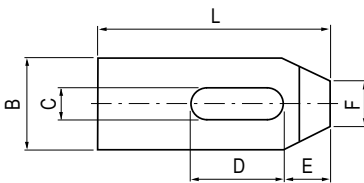
 Staffe semplici ridotte
Shaped standard clamps

R. > 700 N / mm²


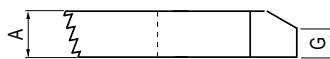
10	20	7	20	10	8	6	7	50	6	60	S211.07050	12
12	25	9	22	13	10	7	10	60	8	140	S211.09060	12
15	30	11	30	15	12	9	9	80	10	220	S211.11080	15
20	40	14	40	21	14	12	12	100	12-14	480	S211.14100	18
20	40	14	50	21	14	12	12	125	12-14	615	S211.14125	19
20	40	14	65	26	14	12	12	160	12-14	800	S211.14160	22
25	50	18	45	26	18	15	15	125	16-18	960	S211.18125	24
25	50	18	65	26	18	15	15	160	16-18	1230	S211.18160	26
25	50	18	80	26	18	15	15	200	16-18	1550	S211.18200	29
30	60	22	60	30	22	20	20	160	20-22	1800	S211.22160	29
30	60	22	80	30	22	20	20	200	20-22	2200	S211.22200	31
30	70	26	80	35	26	20	25	200	24	2450	S211.26200	34
30	70	26	105	35	26	20	25	250	24	3200	S211.26250	37
40	80	34	100	45	34	25	25	250	27-30	4800	S211.34250	58
40	80	34	130	45	34	25	25	315	27-30	6000	S211.34315	67

Art. S220

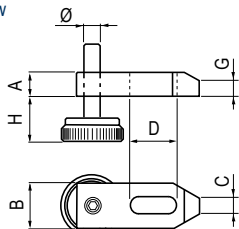
 Staffe dentate
Toothed clamps

R. > 700 N / mm²


10	20	7	20	10	8	6		50	6	55	S220.07050	11
12	25	9	22	13	10	8		60	8	125	S220.09060	12
15	30	11	30	15	12	10		80	10	205	S220.11080	13
20	40	14	40	21	14	12		100	12-14	445	S220.14100	17
25	50	18	45	26	18	15		125	16-18	930	S220.18125	20
30	60	22	60	30	22	18		160	20-22	1700	S220.22160	26
30	70	26	80	35	26	18		200	24	2500	S220.26200	37


Art. S230

 Staffe regolabili con vite a passo fine
Adjustable clamps with fine pitch screw

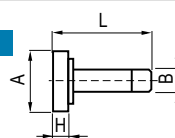
R. > 700 N / mm²


A	B	C	D	G	H	L	Ø		gr	Cod.	€
15	30	11	30	10	8-28	80	M10	10	345	S.230.11080	18
20	40	14	40	12	10-32	100	M12	12-14	680	S.230.14100	24
25	50	18	45	15	13-40	125	M16	16-18	1185	S.230.18125	29
30	60	22	60	18	18-60	160	M20	20-22	2030	S.230.22160	43

Art. S231

 Viti di ricambio
Spare screws

Viti ricambio / Spare screws		A	B	H	L	gr	Cod.	€
Art. S231		40	M10	8	60	130	S231.00010	6
		45	M12	8	60	210	S231.00012	7
		45	M16	8	70	245	S231.00016	8
		45	M20	8	80	300	S231.00020	10

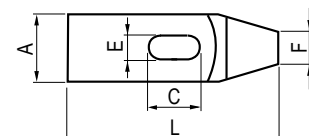
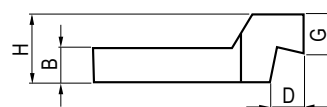


Dimensioni mm / Dimensions mm		A	B	C	D	E	F	G	H	L		gr	Cod.	€
Art. S240		15	30	9	30	18	12			100	8	205	S240.09100	19
Staffe a forcella con gambo cilindrico Forked clamps with cylindrical shank		20	30	11	36	24	16			125	10	335	S240.11125	22
R. > 600 N / mm²		25	40	14	45	30	20			160	12-14	720	S240.14160	24
		25	40	14	45	30	20			200	12-14	920	S240.14200	32
		30	50	18	55	36	24			200	16-18	1310	S240.18200	35
		30	50	18	55	36	24			250	16-18	1640	S240.18250	43
		40	60	22	65	45	30			250	20-22	2160	S240.22250	48
		40	60	22	65	45	30			315	20-22	3300	S240.22315	53
		40	70	26	80	56	38			250	24	3100	S240.26250	62
		40	70	26	80	56	38			315	24	3900	S240.26315	73
		50	80	34	85	56	45			315	27-30	5500	S240.34315	87
		50	80	34	85	56	45			400	27-30	6900	S240.34400	101

Art. S250		15	30	9	30	18	16	5		100	8	225	S250.09100	19
Staffe a forcella con nasello Forket clamps with nib		20	30	11	36	24	20	6		125	10	360	S250.11125	22
R. > 600 N / mm²		25	40	14	45	30	25	7		160	12-14	770	S250.14160	24
		25	40	14	45	30	25	7		200	12-14	950	S250.14200	32
		30	50	18	55	36	28	8		200	16-18	1420	S250.18200	35
		30	50	18	55	36	28	8		250	16-18	1700	S250.18250	43
		40	60	22	65	45	35	10		250	20-22	2790	S250.22250	48
		40	60	22	65	45	35	10		315	20-22	3480	S250.22315	53
		40	70	26	80	56	43	10		250	24	3320	S250.26250	62
		40	70	26	80	56	43	10		315	24	4270	S250.26315	73
		50	80	34	85	56	50	12		315	27-30	5700	S250.34315	87
		50	80	34	85	56	50	12		400	27-30	7250	S250.34400	101

Art. S260		40	20	30	20	14	20	23	40	125	12-14	750	S260.14125	28
Staffe a gomito Cranked clamps		50	25	40	25	18	25	28	50	160	16-18	1510	S260.18160	45
R. > 700 N / mm²		50	25	60	25	18	25	28	50	200	16-18	1790	S260.18200	49
		60	30	40	30	22	30	35	60	160	20-22	2190	S260.22160	54
		60	30	60	30	22	30	35	60	200	20-22	2700	S260.22200	66
		70	35	50	35	26	35	38	70	200	24	3660	S260.26200	69
		70	35	75	35	26	35	38	70	250	24	4560	S260.26250	73

Il pregio dell'articolo sta nell'essere prodotto tramite la fresatura di un blocco d'acciaio (non è quindi piegato)
This article is produced milling a steel block (it is not produced by bending)



Dimensioni mm / Dimensions mm	A	B	C	G	L		gr	Cod.	€
Art. S270 Staffe a forcella con smusso Forked clamps with bevel R. > 600 N / mm²	12	20	7	3	60	6	70	S270.07060	12
	15	25	9	4	80	8	150	S270.09080	13
	20	30	11	5	100	10	270	S270.11100	14
	25	40	14	6	125	12-14	590	S270.14125	18
	25	40	14	6	160	12-14	760	S270.14160	20
	25	40	14	6	200	12-14	970	S270.14200	22
	30	50	18	8	160	16-18	1160	S270.18160	27
	30	50	18	8	200	16-18	1400	S270.18200	28
	40	50	18	10	250	16-18	2330	S270.18250	34
	40	50	22	10	200	20-22	1700	S270.22200	33
	40	60	22	10	250	20-22	2880	S270.22250	41
	40	60	22	10	315	20-22	2530	S270.22315	43
	40	70	26	10	200	24	2680	S270.26200	45
	40	70	26	10	250	24	3370	S270.26250	50
	40	70	26	10	315	24	4220	S270.26315	67
	50	80	34	12	250	27-30	4480	S270.34250	62
	50	80	34	12	315	27-30	5600	S270.34315	73
	50	80	34	12	400	27-30	7150	S270.34400	91
	60	100	40	12	400	36	11700	S270.40400	138
	60	100	40	12	600	36	17300	S270.40600	181

Il pregio dell'articolo sta nell'essere prodotto tramite la fresatura di un blocco d'acciaio (non è quindi piegato)

This article is produced milling a steel block (it is not produced by bending)

Dimensioni mm / Dimensions mm	A	B	C	D	E	F	H	L	Ø		gr	Cod.	€
Art. S280 Staffe regolabili con vite a passo quadro Adjustable clamps with square thread screw R. > 700 N / mm²	20	40	15	40	12	12	15-50	100	20x4	12-14	620	S280.14100	31
	20	40	15	45	12	12	15-50	125	20x4	12-14	770	S280.14125	33
	20	40	15	60	12	12	15-50	160	20x4	12-14	950	S280.14160	35
	25	50	19	45	15	15	15-70	125	20x4	16-18	1090	S280.18125	37
	25	50	19	60	15	15	15-70	160	30x6	16-18	1640	S280.18160	39
	25	50	19	80	15	15	15-70	200	30x6	16-18	1970	S280.18200	44
	30	60	23	60	15	20	15-70	160	30x6	20-22	2120	S280.22160	49
	30	60	23	80	15	20	15-70	200	30x6	20-22	2570	S280.22200	52
	40	70	27	80	25	23	15-70	200	30x6	24	3700	S280.26200	37
	40	70	27	100	25	23	15-70	250	30x6	24	4620	S280.26250	58
	40	70	27	100	25	23	15-70	300	30x6	24	5740	S280.26300	62

Dimensioni mm / Dimensions mm	A	B	H	L	gr	Cod.	€
Art. S281 Viti di ricambio per staffe Spare screw for clamps	10	20 x 4	70	35	190	S281.20004	13
	15	30 x 6	100	45	540	S281.30006	18
	15	30 x 6	125	70	1050	S281.30006.A	22

Filetto TPN passo quadro.
Materiale: 35SMnPb 10 UNI 4838. Classe 8.8
TPN thread square pitch.
Material: SMnPb 10 UNI 4838. Class 8.8

Dimensioni mm / Dimensions mm		A	B	C	D	d	gr	Cod.	€
Art. S151		18	37	8	35	12	70	S151.00035	15
Puntali bombati Convex caps									
Utilizzati su Art. S120, S121, S122, S130, S131 Used on Art. S120, S121, S122, S130, S131									

Art. S152		23	32	8	45	12	145	S152.00045	20
Puntali prismatici "V" groove caps		38	56	8	65	12	580	S152.00065	26
Utilizzati su Art. S120, S121, S122, S130, S131 Used on Art. S120, S121, S122, S130, S131									

Dimensioni mm / Dimensions mm		A	B	C	D		kN F1	kN F2	gr	Cod.	€
Art. ML10		80	40	20	11,7	12	16	0,6	1040	ML10.00012	158
Morsetti laterali Side buckles		80	40	20	13,7	14	22	0,9	1070	ML10.00014	169
		100	50	25	15,7	16	32	1,2	2040	ML10.00016	179
		100	50	25	17,7	18	36	1,4	2080	ML10.00018	190
		100	50	25	19,7	20	36	1,4	2290	ML10.00020	200
		140	78	30	21,7	22	36	1,4	5530	ML10.00022	211
		140	78	30	23,7	24	36	1,4	5800	ML10.00024	221
		140	78	30	27,7	28	40	1,6	6200	ML10.00028	232
Costruzione a cuneo che permette il bloccaggio contemporaneo del pezzo in senso verticale e orizzontale Forniti in coppia		140	78	30	29,7	30	40	1,6	6800	ML10.00030	242
Wesge type construction which enable to simultaneously clamp vertically and horizontally. Supplied in pairs											

STAFFAGGI ASSORTITI ASSORTED CLAMPING TOOLS

Art. S410

Kit 46 pezzi / pcs.



Art. S440

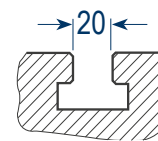
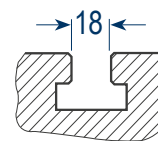
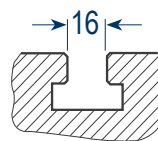
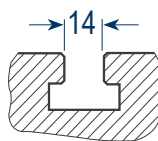
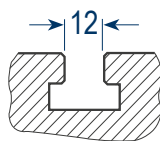
Kit 20 pezzi / pcs.



APPOGGI DENTATI MULTIPLE STEP SUPPORT

Art. S410

Kit 46 pezzi / pcs.



Descrizione contenuto Contents description	Cod. S410.00012	Cod. S410.00014	Cod. S410.00016	Cod. S410.00018	Cod. S410.00020
	€ 393	€ 409	€ 495	€ 539	€ 631
Appoggi dentati / Toothed support	n. 2 S110.00001	n. 2 S110.00001	n. 2 S110.00001	n. 2 S110.00001	n. 2 S110.00001
Appoggi dentati / Toothed support	n. 4 S110.00002	n. 4 S110.00002	n. 4 S110.00002	n. 4 S110.00002	n. 4 S110.00002
Appoggi dentati / Toothed support	n. 2 S110.00003	n. 2 S110.00003	n. 2 S110.00003	n. 2 S110.00003	n. 2 S110.00003
Staffe semplici / Flat clamps	n. 4 S210.14100	n. 4 S210.14125	n. 4 S210.14100	n. 4 S210.18125	n. 4 S210.22200
Staffe dentate / Toothed clamps	n. 4 S220.14100	n. 4 S220.14100	n. 4 S220.18125	n. 4 S220.18125	n. 4 S220.22160
Viti testa martello / T-slot bolts	n. 2 S310.12080	n. 2 S310.14100	n. 4 S310.16100	n. 4 S310.18150	n. 4 S310.20150
Viti testa martello / T-slot bolts	n. 4 S310.12125	n. 4 S310.14150	n. 2 S310.16150	n. 2 S310.18200	n. 2 S310.20200
Prigionieri completi / Studs	n. 2 S320.10080	n. 2 S320.12080	n. 2 S320.14100	n. 2 S320.16125	n. 2 S320.18125
Prigionieri completi / Studs	n. 2 S320.10100	n. 2 S320.12160	n. 2 S320.14160	n. 2 S320.16160	n. 2 S320.18160
Dadi prolung. / Extensions nuts	n. 4 S350.10030	n. 4 S350.12036	n. 4 S350.14042	n. 4 S350.16048	n. 4 S350.18054
Dadi altri / Turned toll nuts	n. 6 S340.12018	n. 6 S340.14021	n. 6 S340.16024	n. 6 S340.18027	n. 6 S340.20030
Tasselli per cave / T-slot nuts	n. 4 S360.10012	n. 4 S360.12014	n. 4 S360.14016	n. 4 S360.16018	n. 4 S360.18020
Rondelle / Washers	n. 6 S370.00012	n. 6 S370.00014	n. 6 S370.00016	n. 6 S370.00018	n. 6 S370.00020
Peso kg / Weight kg	10,5	12	17	18	27
Dimensioni cm / Dimensions cm	37 x 32		47 x 33		50 x 41
Cassetta in legno vuota Wooden box	Cod. S410.BOX01		Cod. S410.BOX02		Cod. S410.BOX03
	€ 105		€ 126		€ 147

Art. S440

Kit 20 pezzi / pcs.

 Descrizione contenuto
Contents description


S110.00001	8 pezzi / pcs
S110.00002	8 pezzi / pcs
S110.00003	4 pezzi / pcs
Peso kg / Weight kg	8,5
Dimensioni cm / Dimensions cm	30,5 x 17


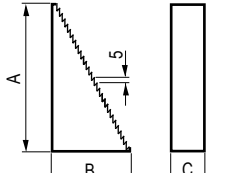
Cod. S440.00001


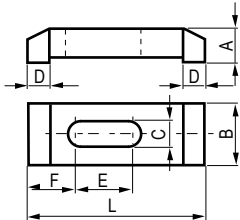
€ 295


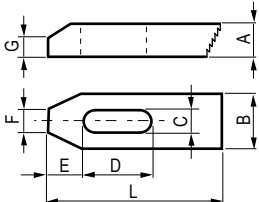
ELEMENTI MODULARI DI STAFFAGGIO Materiale: Alluminio


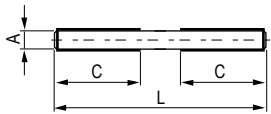
MODULAR CLAMPING TOOLS Material: Aluminum

STAFFAGGI ASSORTITI IN ALLUMINIO - ALUMINIUM ASSORTED CLAMPING TOOLS

Dimensioni mm / Dimensions mm	A	B	C	D	E	F	G	L	gr	Cod.	€
Art. S115 Appoggi dentati / Toothed supports	34	28	25						35	S115.00001	15
	66	38	25						100	S115.00002	19
	128	70	25						280	S115.00003	30

Dimensioni mm / Dimensions mm	A	B	C	D	E	F	G	L	gr	Cod.	€
Art. S215 Staffe doppie / Double clamps	15	25	9	11	28	20		65	40	S215.00065	18
	20	25	9	14	40	20		100	85	S215.00100	20
	20	30	9	18	65	24		150	150	S215.00150	27

Dimensioni mm / Dimensions mm	A	B	C	D	E	F	G	L	gr	Cod.	€
Art. S225 Staffe dentate / Toothed clamps	13	25	9	25	16	10	11	65	43	S225.00065	18
	17	25	9	46	20	11	11	100	92	S225.00100	20
	17	30	9	82	23	12	12	150	162	S225.00150	24

Dimensioni mm / Dimensions mm	A	B	C	D	E	F	G	L	gr	Cod.	€
Art. S325 Prigionieri singoli in acciaio zincato Single studs in zinked steel	M8		40					100	31	S325.08100	4
	M8		40					125	39	S325.08125	5
	M8		40					150	47	S325.08150	5
	M8		40					175	54	S325.08175	5
	M8		40					200	62	S325.08200	6

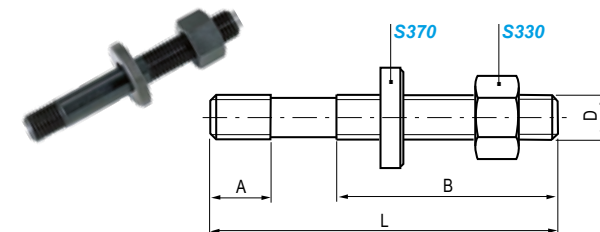
BULLONERIA VARIA Materiale: UNI 42CrMo4 a norma ASTM A193-B7 Classe 10.9

NUTS AND BOLTS Material: UNI 42CrMe4 according to standard ASTM A193 B7 Class 10.9

Dimensioni mm / Dimensions mm	A	B	D	H	L	T	gr	Cod.	€
Art. S310 Vite testa martello completa di dado S340 e rondella S370 Hammerheads bolts complete with nut S340 and washer S370	11,7	55	M12	7	80	18	125	S310.12080	8
	11,7	75	M12	7	125	18	150	S310.12125	8
	13,7	65	M14	8	100	22	215	S310.14100	9
	13,7	100	M14	8	150	22	270	S310.14150	10
	15,7	63	M16	9	100	25	270	S310.16100	10
	15,7	100	M16	9	150	25	345	S310.16150	10
	17,7	100	M18	10	150	28	450	S310.18150	14
	17,7	125	M18	10	200	28	530	S310.18200	14
	19,7	100	M20	12	150	32	600	S310.20150	16
	19,7	125	M20	12	200	32	700	S310.20200	16

Filetto ottenuto per rollatura / Rolled thread

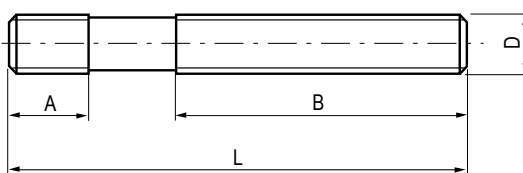
Art. S320

 Prigionieri completi di dado **S330** e rondella **S370**
 Studs complete with short nut **S330** and washer **S370**


Filetto ottenuto per rollatura / Rolled thread

13	50	M10			80		65	S320.10080	4
13	75	M10			100		75	S320.10100	4
15	50	M12			80		95	S320.12080	4
15	100	M12			160		155	S320.12160	5
17	63	M14			100		160	S320.14100	5
17	100	M14			160		215	S320.14160	6
19	75	M16			125		235	S320.16125	6
19	100	M16			160		295	S320.16160	6
23	75	M18			125		300	S320.18125	7
23	100	M18			160		355	S320.18160	7

Art. S321

 Prigionieri singoli
 Single studs


Filetto ottenuto per rollatura / Rolled thread

14	25	M10			60		30	S321.10060	4
14	30	M10			80		40	S321.10080	4
14	35	M10			100		50	S321.10100	4
14	40	M10			120		65	S321.10120	4
14	50	M10			160		80	S321.10160	4
14	60	M10			200		100	S321.10200	4
15	32	M12			60		45	S321.12060	4
15	50	M12			80		55	S321.12080	4
15	63	M12			100		70	S321.12100	4
15	75	M12			125		90	S321.12125	4
15	100	M12			160		115	S321.12160	5
15	125	M12			200		140	S321.12200	5
19	35	M16			65		85	S321.16065	5
19	50	M16			80		105	S321.16080	5
19	75	M16			125		160	S321.16125	5
19	100	M16			160		220	S321.16160	6
19	125	M16			200		280	S321.16200	7
19	160	M16			250		325	S321.16250	8

! Si eseguono su richiesta misure non a catalogo / Other sizes can be supplied on request

BULLONERIA VARIA Material: UNI 42CrMo4 according a norma ASTM A193-B7 Classe 10.9

NUTS AND BOLTS Material: UNI 42CrMo4 according to standard ASTM A193-B7 Class 10.9

DADI e RONDELLE - NUTS and WASHERS

Dimensioni mm / Dimensions mm	A	B	C	D	E	H	M	S	T	gr		Cod.	€
Art. S340 Dadi alti torniti - Turned tall nuts 					21,5	18	M12	19		28		S340.12018	3
					25	21	M14	22		45		S340.14021	4
					27,5	24	M16	24		58		S340.16024	4
					31	27	M18	27		83		S340.18027	4
					34,6	30	M20	30		110		S340.20030	4
Art. S350 Ex. Art. S360 Dadi prolungamento - Extension nuts 					19,6	30	M10	17		42		S350.10030	4
					21,5	36	M12	19		64		S350.12036	4
					25	42	M14	22		95		S350.14042	5
					27,5	48	M16	24		120		S350.16048	5
					31	54	M18	27		170		S350.18054	6
Art. 287 Dadi per cave a "T" - Nuts for "T" slots 	18	14	7	11,7			M10			12	12	2.28.72000 / 12	11
	22	16	8	13,7			M12			22	14	2.28.72000 / 19	11
	25	18	9	15,7			M14			37	16	2.28.740000 / 27	19
	28	20	10	17,7			M16			59	18	2.28.740000 / 32	19
	32	24	12	19,7			M18			82	20	2.28.760000 / 39	38
Art. S370 Rondelle normali tornite - Flat washer 					10,5	22	4			9		S370.00010	2
					13	28	5			20		S370.00012	2
					15	35	6			35		S370.00014	3
					17	35	6			35		S370.00016	3
					19	40	6			45		S370.00018	4
Art. S380 Rondelle alte tornite - Thick washer 					10,5	35	8			55		S380.00010	4
					13	40	8			70		S380.00012	4
					15	40	10			85		S380.00014	4
					17	45	10			105		S380.00016	5
					19	45	10			100		S380.00018	5

! Si eseguono su richiesta misure non a catalogo / Other sizes can be supplied on request

ELEMENTI MODULARI DI STAFFAGGIO Materiale: Acciaio da bonifica verniciato

MODULAR CLAMPING TOOLS Material: Hardened painted steel

KIT STAFFAGGI DA 58 PEZZI - CLAMPING KIT / 58 PIECES

Con appoggi dentati e staffe dentate - With step bloks & stepped strap clamping



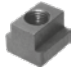





Ciascun kit include tutti i più importanti elementi di staffaggio per serrare una varietà di particolari. La tabella sottostante indica il contenuto di ogni tipologia di kit di staffaggi adatta per differenti dimensioni di cave a "T"

Each kit consists of all important clamping elements required to clamp a variety of work pieces. Following table shows the contents of each model of clamping kit suitable for different T-Slot sizes.

Art. G410

Il Clamping Kit **GERARDI** da 58 pezzi è disponibile in una elegante rastrelliera che può essere appesa alle macchine o su una parete o appoggiata ad un banco.

GERARDI Clamping Kit - 58 pieces is available in an attractive powder coated metallic rack which can be hung on machines or a wall or kept on a table.

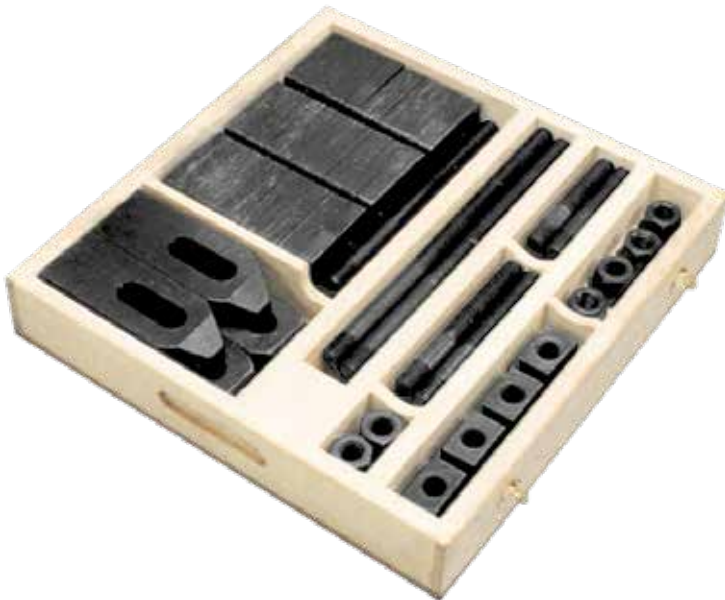
Descrizione prodotto Product Description	Cod.	G410.581210	G410.581410	G410.581412	G410.581612	G410.581812	G410.581816	G410.582016	G410.582216
	€	105	105	139	139	139	190	190	190
		T-SLOT SIZE 12mm	T-SLOT SIZE 14mm	T-SLOT SIZE 14mm	T-SLOT SIZE 16mm	T-SLOT SIZE 18mm	T-SLOT SIZE 18mm	T-SLOT SIZE 20mm	T-SLOT SIZE 22mm
 Dadi a T T nuts (6 pcs)		TN-12-M10	TN-14-M10	TN-14-M12	TN-16-M12	TN-18-M12	TN-18-M16	TN-20-M16	TN-22-M16
 Prigionieri Clamping studs (4 pcs)		CS-10-75 CS-10-100 CS-10-125 CS-10-150 CS-10-175 CS-10-200	CS-10-75 CS-10-100 CS-10-125 CS-10-150 CS-10-175 CS-10-200	CS-12-75 CS-12-100 CS-12-125 CS-12-150 CS-12-175 CS-12-200	CS-12-75 CS-12-100 CS-12-125 CS-12-150 CS-12-175 CS-12-200	CS-12-75 CS-12-100 CS-12-125 CS-12-150 CS-12-175 CS-12-200	CS-16-75 CS-16-100 CS-16-125 CS-16-150 CS-16-175 CS-16-200	CS-16-75 CS-16-100 CS-16-125 CS-16-150 CS-16-175 CS-16-200	CS-16-75 CS-16-100 CS-16-125 CS-16-150 CS-16-175 CS-16-200
 Dadi flangiati Flanged nuts (6 pcs)		FN-10	FN-10	FN-12	FN-12	FN-12	FN-16	FN-16	FN-16
 Dadi prolungamento Extension nuts (4 pcs)		EN-10	EN-10	EN-12	EN-12	EN-12	EN-16	EN-16	EN-16
 Staffe dentate Stepped strap clamps (2 pcs)		SSC-10-60 SSC-10-80 SSC-10-120	SSC-10-60 SSC-10-80 SSC-10-120	SSC-12-65 SSC-12-100 SSC-12-125	SSC-12-65 SSC-12-100 SSC-12-125	SSC-12-65 SSC-12-100 SSC-12-125	SSC-16-75 SSC-16-125 SSC-16-160	SSC-16-75 SSC-16-125 SSC-16-160	SSC-16-75 SSC-16-125 SSC-16-160
 Appoggi dentati Step blocks (4 pcs)		SB-1 SB-2 SB-3	SB-1 SB-2 SB-3	SB-1 SB-2 SB-3	SB-1 SB-2 SB-3	SB-1 SB-2 SB-3	SB-1 SB-2 SB-3	SB-1 SB-2 SB-3	SB-1 SB-2 SB-3
N° totale pezzi Total n. of pieces		58 pieces	58 pieces	58 pieces	58 pieces	58 pieces	58 pieces	58 pieces	58 pieces
Peso lordo totale Total gross weight		9 kg	9 kg	13 kg	13 kg	13 kg	18 kg	18,5 kg	19 kg

ELEMENTI MODULARI DI STAFFAGGIO Materiale: Acciaio da bonifica verniciato

MODULAR CLAMPING TOOLS Material: Hardened painted steel

KIT STAFFAGGI DA 34 PEZZI - CLAMPING KIT / 34 PIECES

Con piastre di appoggio regolabili e piastre dentate - With adjustable support plates & strap clamps

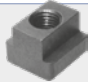



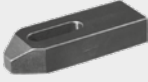
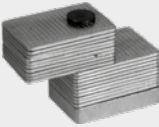


Il Clamping Kit **GERARDI** da 34 pezzi è un clamping kit economico alloggiato in una elegante scatola di legno.

GERARDI Clamping Kit - 34 pieces is an economical clamping kit housed in an elegant wooden box.

Art.G411

La tabella sottostante indica il contenuto di ogni tipologia di kit di staffaggi adatta per different dimensioni di cave a "T"
 Following table shows the contents of each model of clamping kit suitable for different T-Slot sizes.

Descrizione Contenuto Contents Description		Cod.	G411.341412	G411.341612	G411.341812
		€	105	105	105
			T-SLOT SIZE 14mm	T-SLOT SIZE 16mm	T-SLOT SIZE 18mm
	Dadi a T / T nuts (4 pcs)		TN14-M12	TN16-M12	TN18-M12
	Prigionieri Clamping studs (4 pcs)		CS-12-75 CS-12-100 CS-12-150 CS-12-200	CS-12-75 CS-12-100 CS-12-150 CS-12-200	CS-12-75 CS-12-100 CS-12-150 CS-16-200
	Dadi flangiati / Flanged nuts (2 pcs)		FN-12	FN-12	FN-12
	Dadi prolungamento / Extension nuts (2 pcs)		EN-12	EN-12	EN-12
	Staffe dentate Stepped strap clamps (2 pcs)		SSC-12-100 SSC-12-125	SSC-12-100 SSC-12-125	SSC-12-100 SSC-12-125
	Piastre di appoggio regolabili Adjustable support plates (2 pcs)		ASP-250 ASP-2100	ASP-250 ASP-2100	ASP-250 ASP-2100
N° totale pezzi / Total n. of pieces			34 pieces	34 pieces	34 pieces
Peso lordo totale / Total gross weight			-	-	-

ELEMENTI MODULARI DI STAFFAGGIO Materiale: Acciaio da bonifica verniciato

MODULAR CLAMPING TOOLS Material: Hardened painted steel

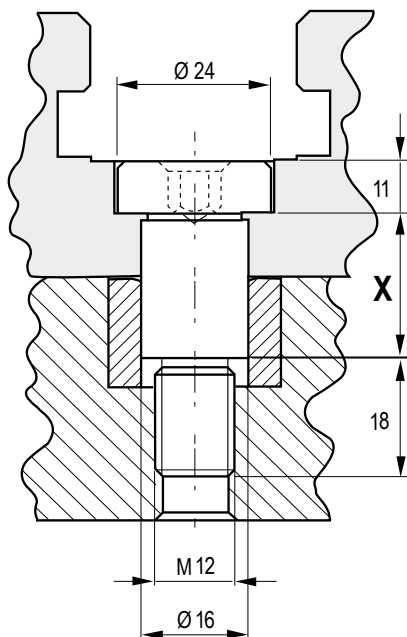
VITI CALIBRATE - CALIBRATED SCREWS

Dimensioni mm / Dimensions mm

X = mm
gr

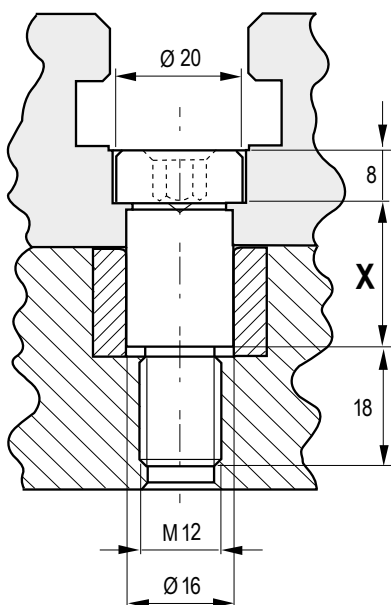
Cod.

€
Art.83

 Vite calibrata a colletto
Shoulder calibrated screw


30	60	8.83.16300	10
35	70	8.83.16350	11
40	80	8.83.16400	11
45	90	8.83.16450	12
50	90	8.83.16500	12
55	100	8.83.16550	13
60	100	8.83.16600	13
65	110	8.83.16650	14
70	120	8.83.16700	15
75	130	8.83.16750	15
80	140	8.83.16800	16
85	150	8.83.16850	16
90	160	8.83.16900	17
95	170	8.83.16950	17
100	180	8.83.16100	18

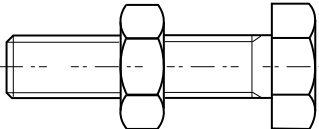
Art.83B

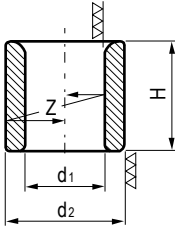
 Vite calibrata a colletto
Shoulder calibrated screw


20	50	8.83.B1620	9
25	50	8.83.B1625	10
30	60	8.83.B1630	10
35	60	8.83.B1635	11
40	70	8.83.B1640	11
45	80	8.83.B1645	12
50	90	8.83.B1650	12
55	90	8.83.B1655	13
60	100	8.83.B1660	13
65	110	8.83.B1665	14
70	120	8.83.B1670	15
75	130	8.83.B1675	15
80	140	8.83.B1680	16
85	150	8.83.B1685	16
90	160	8.83.B1690	17
95	170	8.83.B1695	17
100	180	8.83.B1610	18

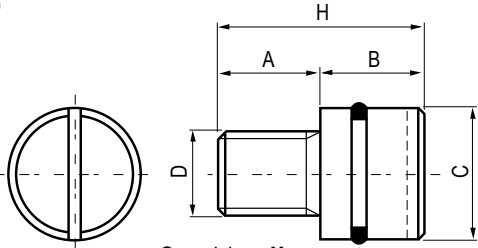
BULLONERIA VARIA

BUSHINGS AND BOLTS

Dimensioni mm / Dimensions mm	Peso gr Weight	Cod.	€
Art.83C			
Vite riscontro Bolt travel limit			
			
M10 x 50		8.83C.413010	17
M10 x 60		8.83C.413020	17
M12 x 50		8.83C.513010	17
M12 x 60		8.83C.513020	17

Dimensioni mm / Dimensions mm	d2	H	Z	Cod.	€
Art.83D					
Bussole di centraggio in acciaio speciale cementato HRc60. DIN 179C - 12 / 16 / 20 mm					
Centering bushing are in special alloy steel case hardened and heat treated hardness HRc60. DIN 179C - 12 / 16 / 20 mm					
					
12F7	18n6	12	0,01	8.83.D0000/12	6
16F7	26n6	16	0,01	8.83.D0000/16	7
20F7	30n6	20	0,01	8.83.D0000/20	8

	Cod.	€
Art.83E		
Filetti riportati in acciaio INOX M10 / M12 / M16		
M10 / M12 / M16 stainless steel helicoil		
		
	8.83.E0000/10	3
	8.83.E0000/12	3
	8.83.E0000/16	3

Dimensioni mm / Dimensions mm	B	C	D	H	X	Cod.	€	
Art.84								
Tappi di chiusura (Alluminio)								
Plug (Aluminium)								
								
	10	11	12	M10	21	OR.108	8.84.403010	5
	15	16	16	M12	31	OR.3043	8.84.503010	5
	15	19	20	M16	34	OR.119	8.84.603010	7

Guarnizione X
Packing X

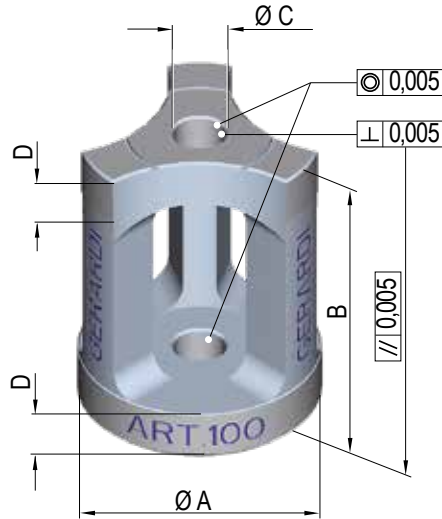
PORTAPEZZI MODULARI - STAFFE INTELLIGENTI

MODULAR PIECE-HOLDERS - INTELLIGENT CLAMPS

Dimensioni mm / Dimensions mm	A	B	C	D	Cod.	€
Art. 100	80	100	16	16	8.10.08010	372
	100	100	20	20	8.10.01010	393
	100	120	20	20	8.10.01012	427

Staffe intelligenti
Intelligent clamp

Dolci o temprate
Soft or hardened

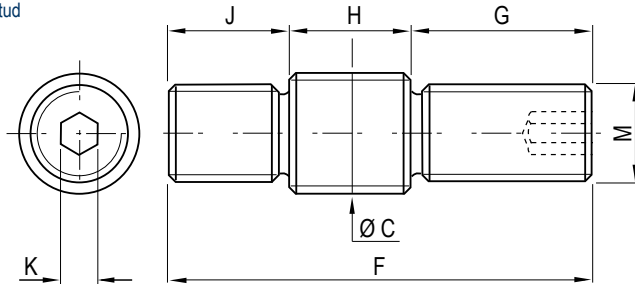


A richiesta anche speciali / On request taylor made

PRIGIONIERO - STUD	E	F	G	H	J	K	M	Cod.	€
Art. 101	16	80	30	30	20	6	16	8.10.12080	23
	20	100	35	40	25	6	20	8.10.12410	27
	20	120	40	50	30	6	24	8.10.13012	33

Dadi e rondelle inclusi
Including washer and nuts

Prigioniero
Stud



A richiesta anche speciali / On request taylor made

Art. 376 in dotazione / Standard equipment

1- Un primo lato del particolare da lavorare deve prima essere finito e predisposto per adattarsi alle staffe G.i. Normalmente si devono realizzare fori di precisione con filetto finale che servono per il posizionamento e l'ancoraggio superiore delle staffe G.i.

1- The first face of the work piece must be finished to fit the new G.i. clamps. This means to make precision holes with a bottom thread which is used to fix the upper part of the G.i. clamps.

2- Ancoraggio inferiore delle staffe G.i. sulla Vostra tavola a reticolo, oppure tramite una piastra a reticolo di interfacciamento se la Vostra tavola non può adattarsi alle staffe G.i.

2- Fix the lower part of the G.i. clamps to the modular grid table or to another modular grid plate for interfacing with the normal table.

FASI DI LAVORAZIONI CON LE STAFFE INTELLIGENTI Gi

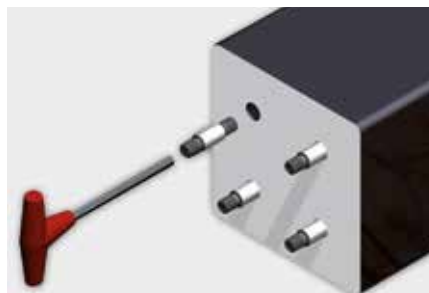
WORK CYCLE OPERATIONS WITH INTELLIGENT CLAMPS Gi



1

Lavorazione della prima faccia del pezzo grezzo e realizzazione delle sedi dei prigionieri con intassi simili al vostro piano a reticolo

First face of the rough workpiece must be finished including precision holes with bottom thread with same pitch of your grid plate for placing stud



2

Inserire i prigionieri nella faccia del pezzo lavorato

Place the studs in the finished face

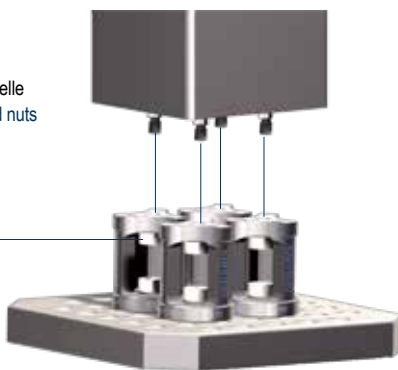


3

Fissare le staffe G.i. sul piano a reticolo per mezzo dei prigionieri

Fix the G.i. clamps on the grid plate through the studs

Dadi e rondelle
Washer and nuts



4

Solleverlo il pezzo con inseriti i prigionieri e fissarlo sulle staffe G.i. tramite i dadi

Lift the workpiece with the studs in position and fixed to the G.i. clamps through the nuts



5

Ora il pezzo è fissato e posizionato

Now the workpiece is fixed and positioned the nuts

- Minimo ingombro e peso praticamente nullo ! Sistema semplificato al massimo !
- 5 lati liberi da lavorare senza alcun ingombro - Il percorso dell'utensile è libero e senza alcun intoppo
- Precisione di posizionamento facile e sicuro senza alcuna possibilità di spostamento in qualsiasi condizione di lavoro. Ripetibilità entro 0,02mm
- Semplicità, notevole risparmio di tempo e rapidità di staffaggio e posizionamento contemporanei
- Ammortamento praticamente immediato per i costi delle nuove staffe intelligenti G.i.
- Utilizzabili subito su qualsiasi Vs. tavola a reticolo oppure usando piastre di interfacciamento a reticolo se la Vs. tavola a cave non può adattarsi alle staffe G.i.
- Innalzamento automatico del Vs. pallet per centri di lavoro orizzontali che normalmente necessitano di una sovravola per sfruttare a pieno la corsa verticale del mandrino
- Disponibili sia dolci che temprate

- A simple system - Light weight - Minimum overall dimensions
- 5 free faces of the work piece can be machined without interference and the cutting tool can travel freely
- Easy, safe rigid and very accurate workpiece holding repeatability within 0,02mm.
- High time saving with simultaneous and simple workpiece positioning and clamping
- Cost quickly recovered in time saving
- Readily useable on grid tables or plates or using extra interface plates to the machine table
- Raises the work piece without the need for an extra over table. Thus allowing full utilization of the machine spindle vertical travel
- G.i. clamps available soft or hardened

